

AppleTV Upgrade Instructions

(c) 2001-2007, weaKnees. All rights reserved.

Instructions for AppleTV Replacement/Upgrade Hard Drive Installation
Instructions are available online (in COLOR) at <http://www.weaknees.com>

A FEW WORDS OF CAUTION:

Upgrading electrical equipment of this type presents a few physical hazards. As with most consumer electronics devices, components in the AppleTV may still carry a lethal charge, even after disconnecting from your power supply. Be aware of this while working inside your AppleTV. Allow sufficient time for discharging of components and avoid contact as much as possible with potential hazards. While we have done everything we can to provide accurate, easy-to-follow instructions, we cannot be responsible for any damage done to your AppleTV or to yourself as a result of your upgrade. By opening your AppleTV, you agree that neither weaKnees nor any of its members or affiliates is responsible in any way for any harm done. Please be VERY careful when upgrading. NEVER open the AppleTV while the unit is plugged in and NEVER operate the AppleTV if the lid is not securely fastened. PLEASE NOTE: Opening the AppleTV voids the Apple warranty.

IF YOU NEED TECHNICAL SUPPORT:

We are more than happy to answer any questions that you might have regarding your installation. We answer email very frequently, and can often be reached that way at night or even on weekends. We encourage you to try email first, but you are also free to call us any time if you have questions about your installation or these instructions.

OVERVIEW

Upgrading your AppleTV entails just three basic steps:

- (1) Opening the AppleTV and removing the drive
- (2) Installing the upgrade drive and closing the unit
- (3) Setting the drive to clear

Kit includes these items:

- Formatted upgrade hard drive
- Torx T-8 Screwdriver
- Torx T-10 Screwdriver
- These instructions

1. OPENING THE APPLETV

Unplug the power cord and all other cables from the back of your AppleTV and wait five minutes for the AppleTV to discharge. Do not plug the AppleTV back in until you are completely finished. Be very careful of static electricity, which can destroy your AppleTV's internal parts. You should not perform this upgrade on carpet. You may want to label the wires that you remove from the back of your AppleTV so that you can easily locate where they belong.

Lay the AppleTV face-down on a soft surface, such as a thin towel, on a firmer surface such as a countertop. Begin opening the unit by peeling back the rubber base at the two back bottom corners of the unit. You do not need to remove the entire rubber bottom; you only need to peel back the rubber enough to locate the screwhead at each corner. See Figure 1. Remove each screw with the Torx T-10 (larger) screwdriver (included with the upgrade kit). Set aside the two screws for later reassembly.

Turn the unit around and peel back the rubber from the front side of the unit. On this side, you will need to peel the rubber back about three inches exposing six screwheads. See Figure 2. Remove all six screws – the two outside ones with the Torx T-10 screwdriver, and the four inner ones with the Torx T-8 screwdriver and set aside for reinstallation.

Now, to remove the entire bottom cover, gently lift the right edge of the base (when looking at the front of the unit from the bottom) and pivot this up. Then lift the left edge slowly. This edge is attached by a cable and won't lift as far. See Figure 3 (the front is at the bottom of the frame).



Figure 1



Figure 2



Figure 3

At this point you will be able to remove the existing hard drive from the bottom cover. The drive is lightly stuck to the bottom cover of the AppleTV. Pull the drive off. Gently remove the cable (IDE cable) from the AppleTV drive by pulling the black part of the cable's connector straight out from the drive. See Figure 4.

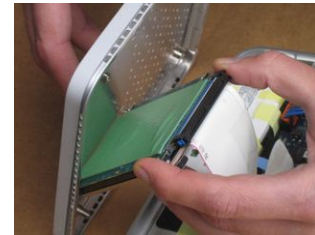


Figure 4

2. INSTALLING THE UPGRADE DRIVE

Peel the insulation layer off the factory AppleTV drive and lay it on the upgrade AppleTV drive in the same position.

Prepare to attach the IDE cable from the AppleTV to the new upgrade drive. Look at the IDE connector and find the blocked pinhole. Make sure to align that to the location on the drive where no pin is present in the bottom row of pins. Slide the connector on until you can't see the pins. See Figure 5.

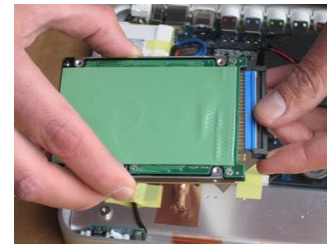


Figure 5

Now you're ready to attach the new drive to the case and reassemble the unit. Hold the bottom cover in one hand keeping the cover peeled back. Holding the drive in your other hand, align the new drive (with IDE cable connected) to the bottom cover of the AppleTV. Make sure the four mounting holes on the drive match the four holes on the bottom of the case. See Figure 4.



Figure 6

Reinstall the four drive screws with the T-8 driver (the shortest screws from step 2). You may need to peel back the rubber again to get access to these holes.

Align the bottom cover on the AppleTV and lower it into place. Then reinstall the four mounting screws with the T-10 driver. The longer two screws go in the holes in the front of the unit, and the shorter two screws go in the back near the connector. See figures 1 and 2.

3. POWERING UP AND CLEARING THE APPLETV UPGRADE DRIVE

Reattach your cables to the back of the AppleTV and apply power. Within a minute you should see the Apple logo on the screen.

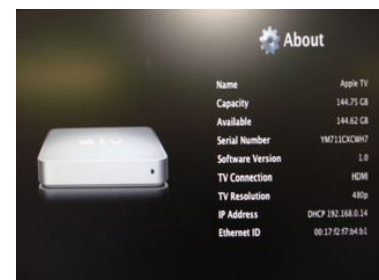
You will be asked to choose your language, and on the next screen you must choose Factory Restore – see figure 7. Confirm on the next screen (figure 8).

If you had previously connected your AppleTV to any computers, you will need to remove the old unit since iTunes will now think this is a new unit. Just set it up the same way as the old one, and it will begin re-syncing.



Figures 7 & 8

To confirm the capacity of your new drive, go to the About screen. Formatted drive capacity may be up to 15% lower than the capacity printed on the label.



We thank you very much for your purchase and hope that you enjoy your newly-enhanced AppleTV. Please [email us](#) with any comments, suggestions or complaints. If you found the upgrade easy to install (or even if you found it more difficult than you expected), we'd love to know. If you found our service to be excellent (or awful), we want to know that too. We're always looking to improve our products and services...the more we hear from you, the better. Thanks very much!